

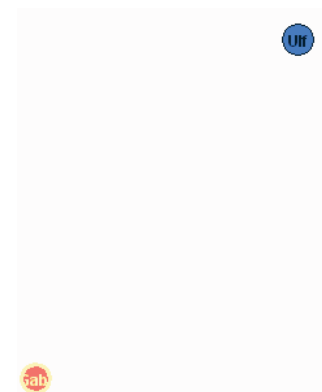
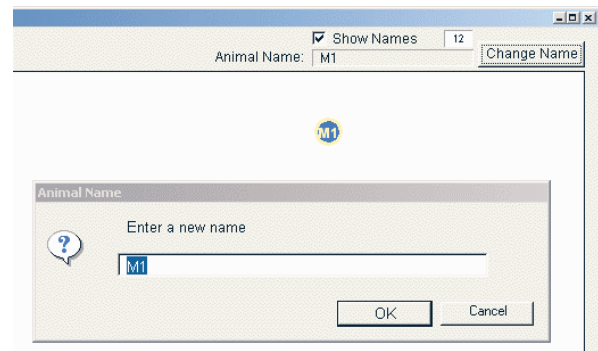
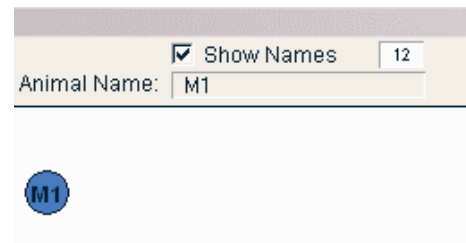
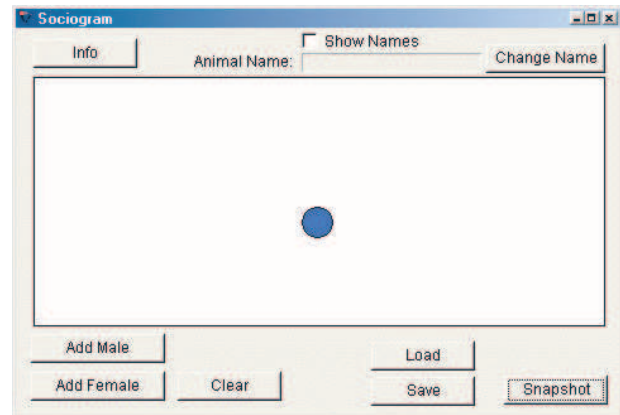
Sociogram

"Sociogram" is a simple program to generate sociogram-graphics showing the relationships between individuals (humans or animals). Let's start the tutorial by clicking on the "Add male"-button and thereby adding a blue circle representing a male individual. The circle can be moved within the white background with the mouse.

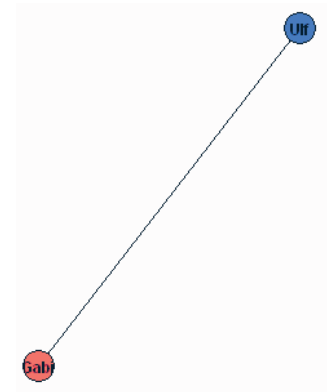
By clicking the checkbox "Show names", the name of the individual "M1" is shown. In order to re-name it, double-click on the circle and

press the button "Change Name".

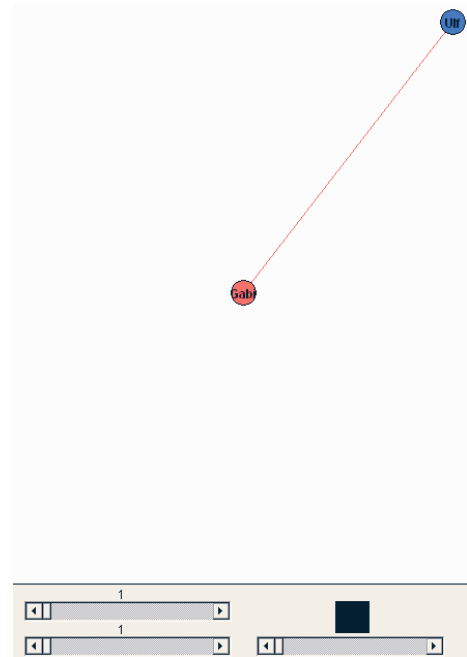
Now we can create a female individual (red circle) by pressing the "Add Female"-button. Double-click on the circle in order to re-name the individual. To connect circles with lines, double-click on the first circle and then



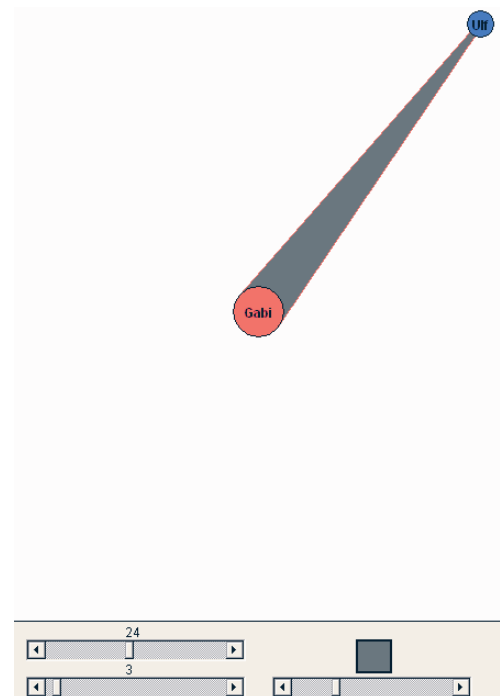
double-click on the second circle.



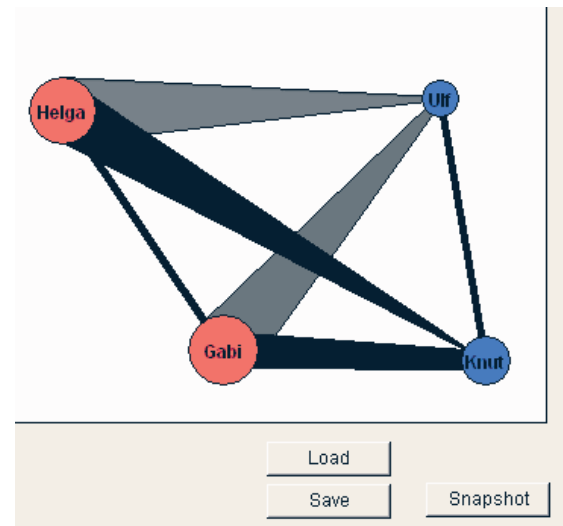
By single-clicking on the line (an accurate click will turn the line red) you can modify it regarding



thickness at start and endpoint, and color, by using the scrollbars below. You can rearrange the position of every circle without changing the relationship.



When you have finished your sociogram you can save it as a text file by pressing the "Save"-button. You can load a previously saved sociogram with the "Load"-button.



To save the sociogram as a graphic file, press the "Snapshot"-button, enter a filename and then select the part of the image you want to export as a graphic file (file type: *.png).

